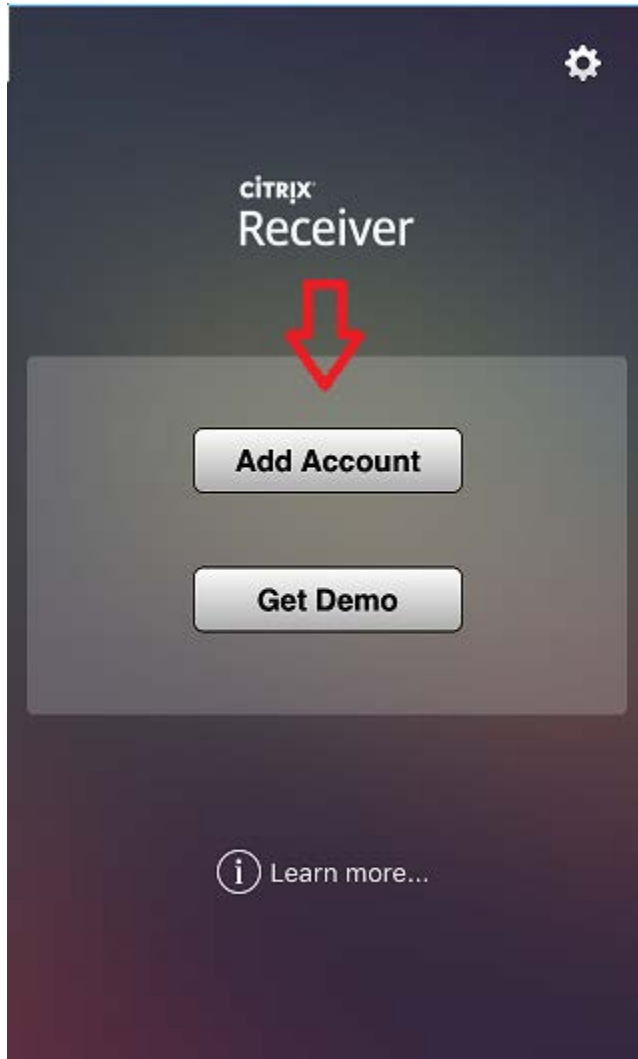
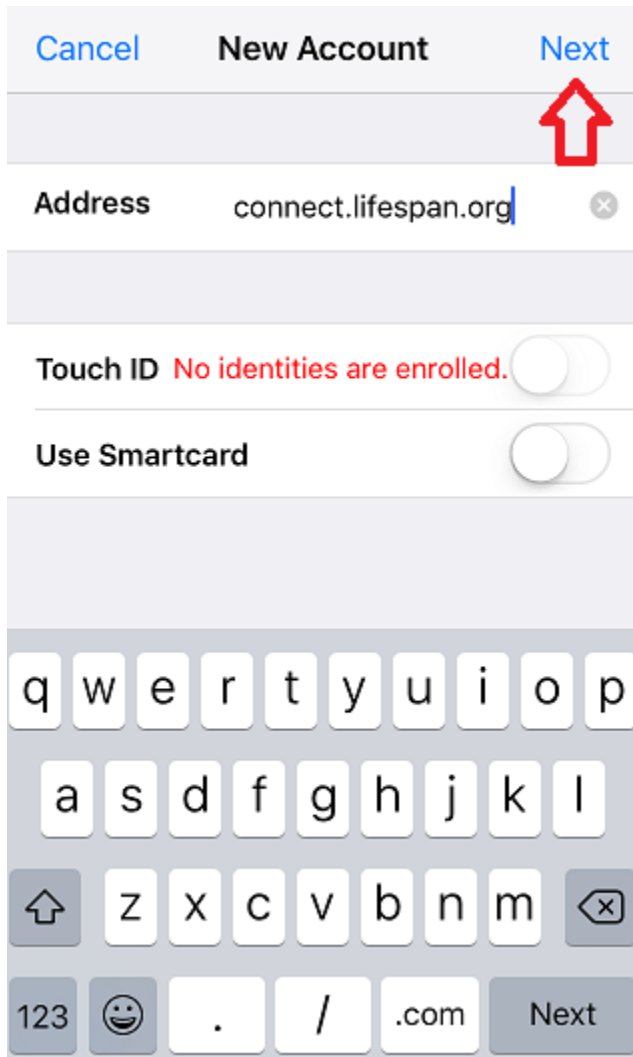


iPhone Citrix Receiver Setup for Lifespan Connect

1. Download and install Citrix receiver from the app store
2. Open Citrix receiver
3. Once receiver is open hit the Add Account button




4. On the new New Account screen, in the address field, type connect.lifespan.org and then hit next



5. At the log on to Citrix Receiver page type in your username and password. For domain please put lsmaster. After inputting your username, password, and the domain please hit log on

[Cancel](#) **Log On to Citrix Re...** [Log On](#)

User Name | User Name 

Password | Password

Domain | Domain

q w e r t y u i o p
a s d f g h j k l
⬆ z x c v b n m ⬅
123 😊 🎤 space Next

6. Once you are logged you should see all your applications like the screenshot below. To launch an application just tap on it

